



# PARTS LIST



## Models

Mfg. No.	Description
309001x08A	ngine Rider (2009)

Manual Part No. 400220

Revision -

Rev. Date: 4/15/2009

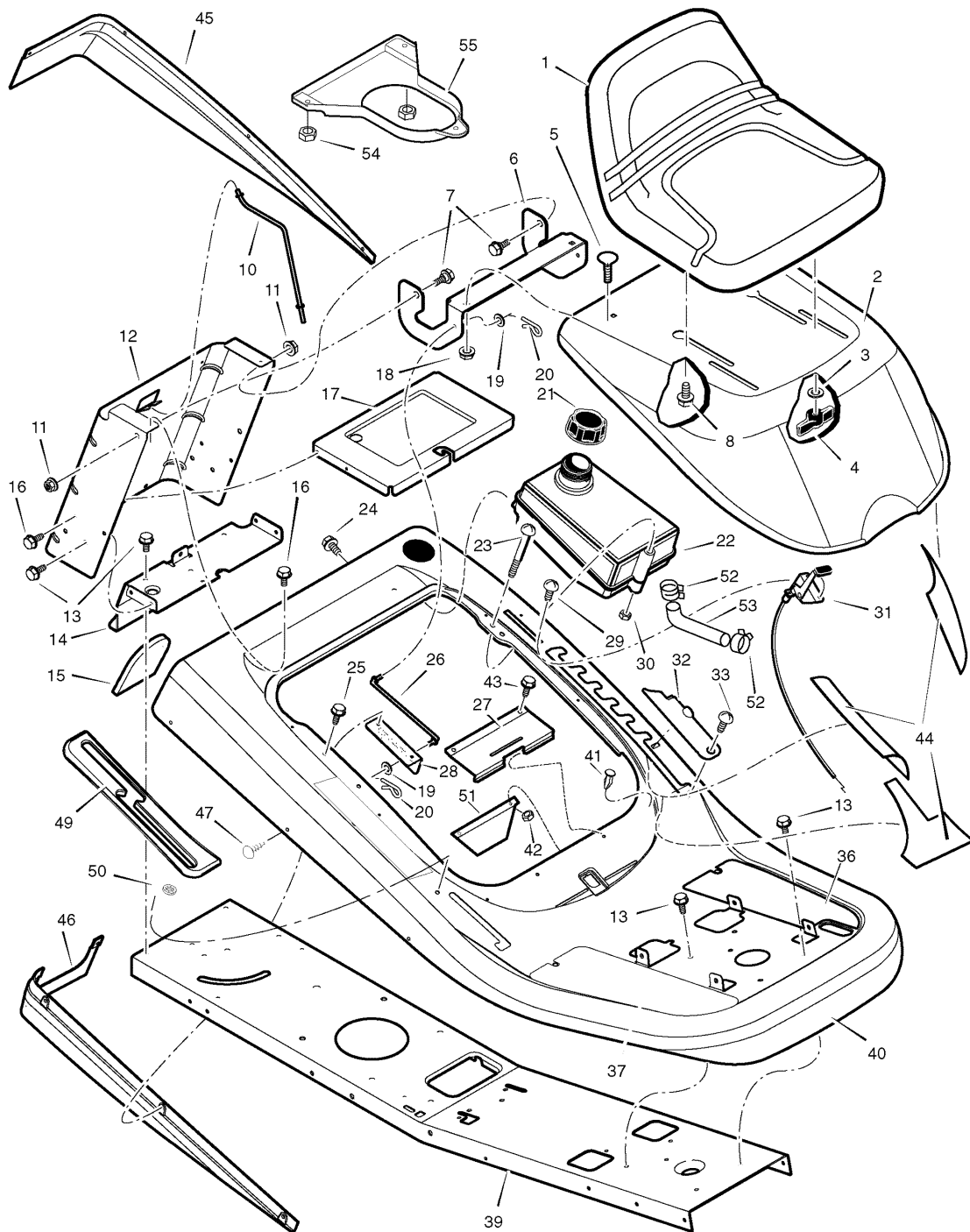


<b>PRODUCT COMPONENTS</b>	<b>PAGES</b>
Chassis & Hood .....	4
Steering .....	8
Motion Drive .....	10
Decals .....	16
Electrical System .....	18
Mower Housing .....	20
Mower Housing Suspension .....	24
<b>Torque Specification Chart .....</b>	<b>Inside Back Cover</b>

## Chassis & Hood

0003

**NOTE:** Unless noted otherwise,  
use the standard hardware torque  
specification chart.



**The above parts group applies to the following Mfg. Nos.:**  
309001x08A Mid-Engine Rider (2009)

## Chassis & Hood

REF NO	PART NO.	DESCRIPTION
1	690566MA	SEAT
2	1401379E201MA	HOOD
3	017X47MA	WASHER, Flat, 5/8
4	1001054MA	BOLT, Wing
5	002X53MA	Bolt, Carriage, 5/16-18 x 5/8
6	1401378E701MA	BRACKET, Hinge
7	009X29MA	BOLT, Shoulder, 3/8-16 x 1/2
8	009X56MA	BOLT, Shoulder, 5/16-18 x 3/8
10	1401113MA	ROD, Battery
11	015X84MA	NUT, Flange, 3/8-16
12	1401025E701MA	PLATE, Rear
13	26X249MA	SCREW, 5/16-18 x 3/4
14	1401050E701MA	PLATE, Hitch
15	1401087MA	COVER
16	26X263MA	SCREW, 1/4-20
17	1401076E701MA	TRAY, Battery
18	015X79MA	NUT, Flange Lock, 5/16-18
19	017X45MA	WASHER, Flat
20	0031X6MA	PIN, Hair
21	092317MA	CAP, Fuel Tank
22	1401361MA	TANK, Fuel (Includes Ref. Nos. 21, 23 & 42)
23	06X111MA	SCREW, 1/4-20 x 1/2
24	26X253MA	SCREW, Thread Forming
25	26X263MA	SCREW, 1/4-20
26	1401110MA	ROD, Hood Prop
27	1401282MA	SPRING, Seat Deck
28	1401352E701MA	BRACKET, Prop Rod
29	26X201MA	SCREW,
30	15X116MA	NUT, Nylock
31	1401248MA	CONTROL, Throttle
32	1401084MA	COVER, Detent (Black)
33	009X47MA	BOLT, Shoulder, 10-24 x 1/2
36	1401145MA	FOOTMAT, Left (Black)
37	1401144MA	FOOTMAT, Right (Black)
39	1401392E701MA	FRAME
40	1401026E201YP	DECK, Seat
41	094744MA	BUMPER

### Footnotes

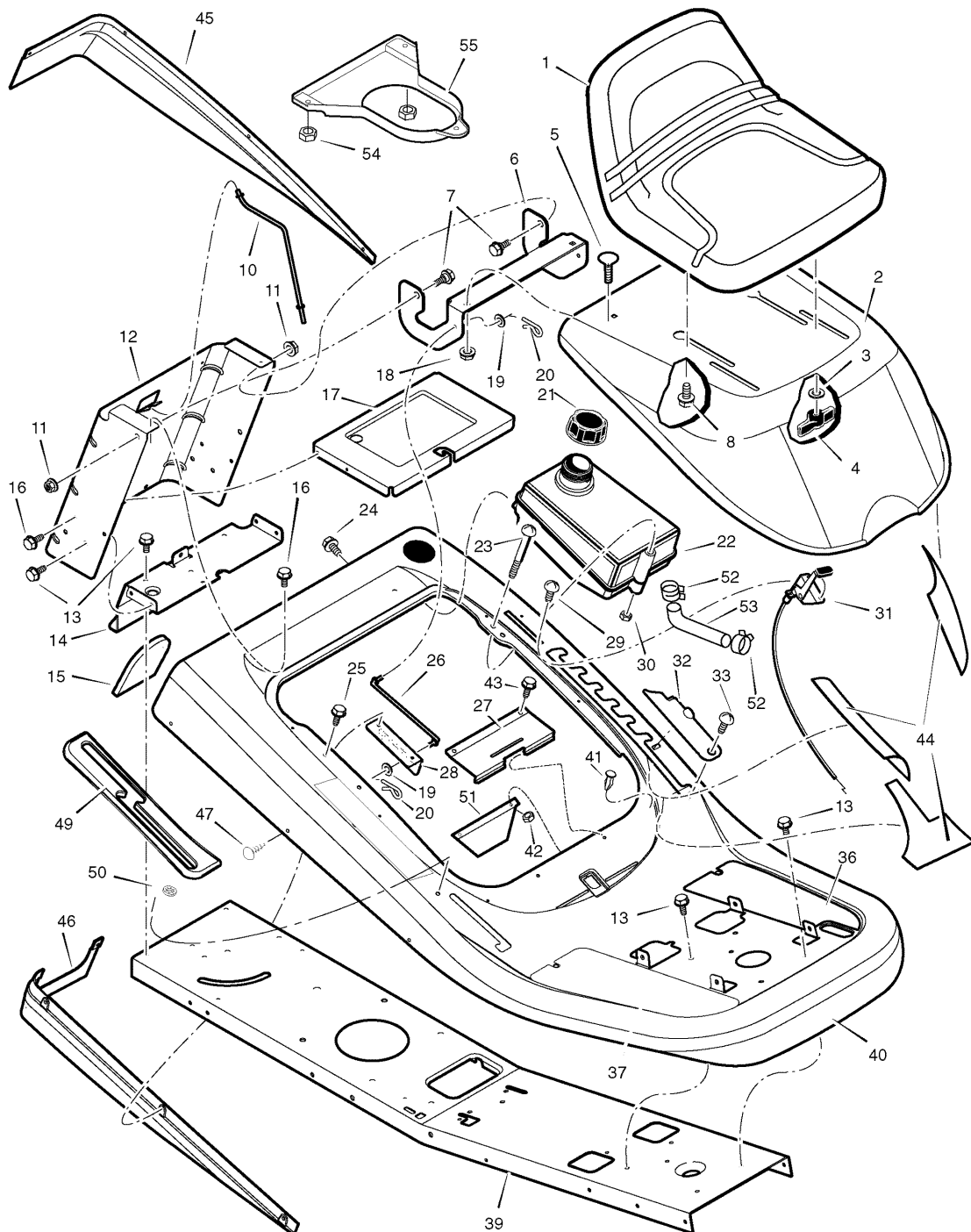
**The above parts group applies to the following Mfg. Nos.:**

309001x08A Mid-Engine Rider (2009)

## Chassis & Hood

0003

**NOTE:** Unless noted otherwise,  
use the standard hardware torque  
specification chart.



**The above parts group applies to the following Mfg. Nos.:**  
309001x08A Mid-Engine Rider (2009)

## **Chassis & Hood**

---

<b>REF NO</b>	<b>PART NO.</b>	<b>DESCRIPTION</b>
42	15X116MA	NUT, 1/4-20
43	0025X2MA	SCREW, 1/4-20 x 1/2
44	7601036MA	KIT, Foil Heat Shield (Includes Ref. Nos. 45, 46 & 47)
45	1401073MA	TRIM, Left
46	1401072MA	TRIM, Right
47	0193X1MA	FASTENER, Panel
49	1401331MA	COVER, Long Black
50	028X78MA	NUT, Push
51	1401401MA	HEAT SHIELD
52	095197MA	CLAMP, Hose
53	1401402MA	LINE, Fuel
54	15X123MA	NUT, Hex 5/16-18
55	1401380MA	PLENUM, Engine
--	13299	BOOK, Instruction
--	13300	PARTS LIST

## **Footnotes**

---

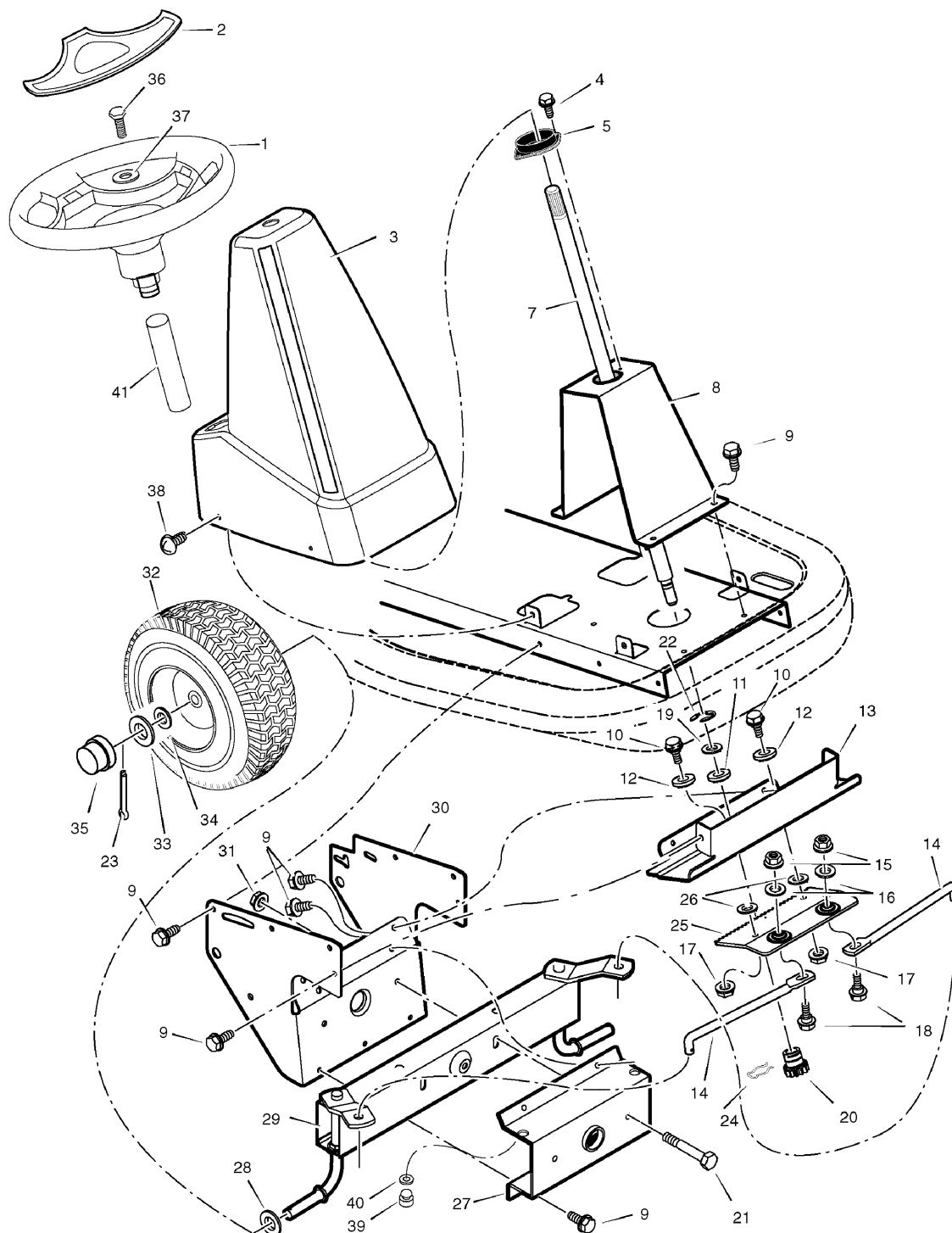
**The above parts group applies to the following Mfg. Nos.:**

309001x08A Mid-Engine Rider (2009)

# Steering

0005

**NOTE:** Unless noted otherwise, use the standard hardware torque specification chart.



**The above parts group applies to the following Mfg. Nos.:**  
309001x08A Mid-Engine Rider (2009)

## Steering

REF NO	PART NO.	DESCRIPTION
1	094134MA	WHEEL, Steering
2	1001982MA	Cap, Steering (Black)
3	1401044MA	CONSOLE, Low (Black)
4	26X250MA	SCREW
5	1401090MA	BEARING, Upper Steering
7	1401100MA	SHAFT, Steering
8	1401055E701MA	SUPPORT, Steering
9	26X249MA	SCREW
10	009X67MA	BOLT, Shoulder
11	1401098MA	BEARING, Lower Steering
12	1401102MA	ROLLER
13	1401058E701MA	PLATE, Gear Mounting
14	1401123E701MA	LINK, Drag
15	015X84MA	NUT, Flange
16	710083MA	WASHER
17	015X88MA	NUT, Flange
18	01X111MA	BOLT, Hex
19	17X118ZMA	WASHER
20	1401099MA	GEAR, Pinion
21	01X146MA	BOLT, Hex, 5/16-24 x 2-3/4
22	011X23MA	E-RING, Retainer
23	030X35MA	PIN, Cotter
24	094131MA	RETAINER, Spring
25	1401046E701MA	RACK, Steering
26	17X201MA	WASHER
27	1401376E701MA	BRACKET, Axle Front
28	17X157MA	WASHER
29	1401250E701MA	AXLE & SPINDLE ASSEMBLY
30	1401059E701MA	BRACKET, Support
31	15X118MA	NUT, Flange
32	1401381601MA	WHEEL, Front
33	17X197MA	WASHER
34	17X157MA	WASHER
35	094618MA	Cap, Hub
36	0025X3MA	SCREW, Hex
37	17X146MA	WASHER
38	26X270MA	SCREW
39	1401377MA	BUMPER
40	017X91MA	WASHER
41	1401107YP	TUBE

## Footnotes

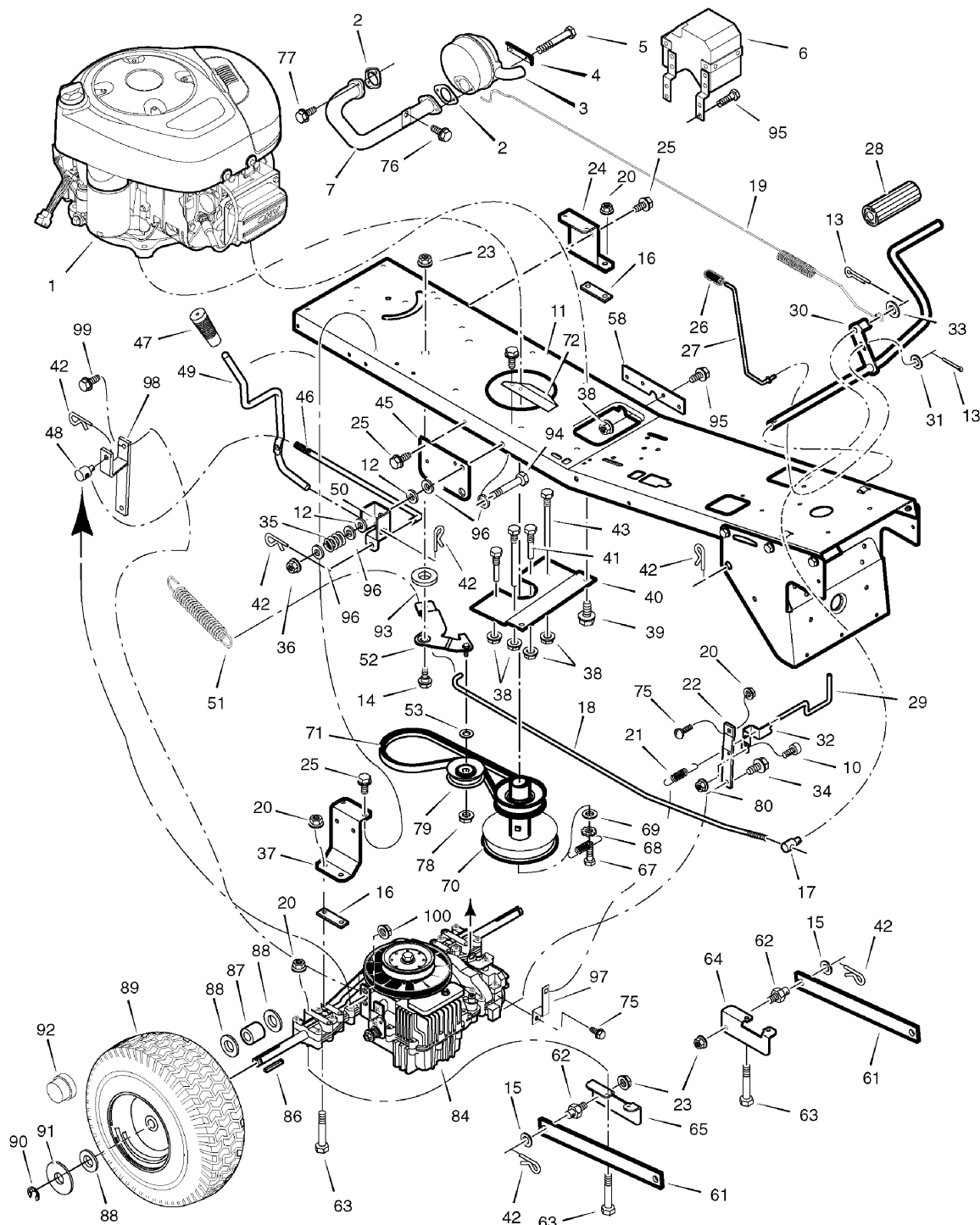
**The above parts group applies to the following Mfg. Nos.:**

309001x08A Mid-Engine Rider (2009)

# Motion Drive

NOTE: Unless noted otherwise,  
use the standard hardware torque  
specification chart.

0007



The above parts group applies to the following Mfg. Nos.:  
309001x08A Mid-Engine Rider (2009)

## Motion Drive

REF NO	PART NO.	DESCRIPTION
1	217807-0148-B1	*ENGINE, 11 HP, Briggs & Stratton (Engine Model: 217807-0148-B1)
2	692236	GASKET, Muffler
3	1401358MA	MUFFLER
4	092378MA	LOCK, Muffler Screw
5	01X134MA	BOLT, Hex, 5/16-18 x 4
6	1401375MA	SHIELD, Heat
7	1401357MA	TUBE, Exhaust
10	0025X3MA	SCREW, Thread Forming
11	1401392E701MA	FRAME
12	17X217MA	WASHER
13	030X20MA	PIN, Cotter
14	009X39MA	BOLT, Shoulder
15	017X91MA	WASHER
16	1401334ZMA	PLATE, Transaxle
17	094815ZMA	NUT, Adjusting
18	1401305ZMA	ROD, Clutch Hydro
19	165X165MA	SPRING, Brake
20	015X88MA	NUT, 5/16-18
21	1742524YP	SPRING, Roll Release
22	1741782YP	BRACKET, Torque Strap
23	015X84MA	NUT, 3/8-16
24	1401268E701MA	BRACKET, Left Transaxle
25	26X249MA	SCREW
26	1401337MA	GRIP
27	1401112MA	ROD, Parking Brake
28	021544MA	PEDAL
29	1401304ZMA	ROD, Roll Release
30	1401127E701MA	ROD, Clutch/Brake
31	017X38MA	WASHER
32	1401303E701MA	BRACKET, Roll Release
33	017X53MA	WASHER
34	01X120MA	SCREW, 3/8-16 x 2
35	164X39MA	SPRING, Compression
36	15X119MA	NUT, 3/8-24
37	1401042E701MA	BRACKET, Right Transaxle
38	015X79MA	NUT, 5/16-18
39	0025X7MA	SCREW, 3/8-16 x 1-1/4
40	1401057E701MA	PLATE, Belt Guide
41	1401105MA	GUIDE, Belt -Long
42	0031X4MA	PIN. HAIR
43	1401104MA	GUIDE, Belt, Short

### Footnotes

Note\* See your local Briggs & Stratton distributor for parts and service.

Note\*\* For information on Replacement Parts for this transaxle contact the manufacturer.

---

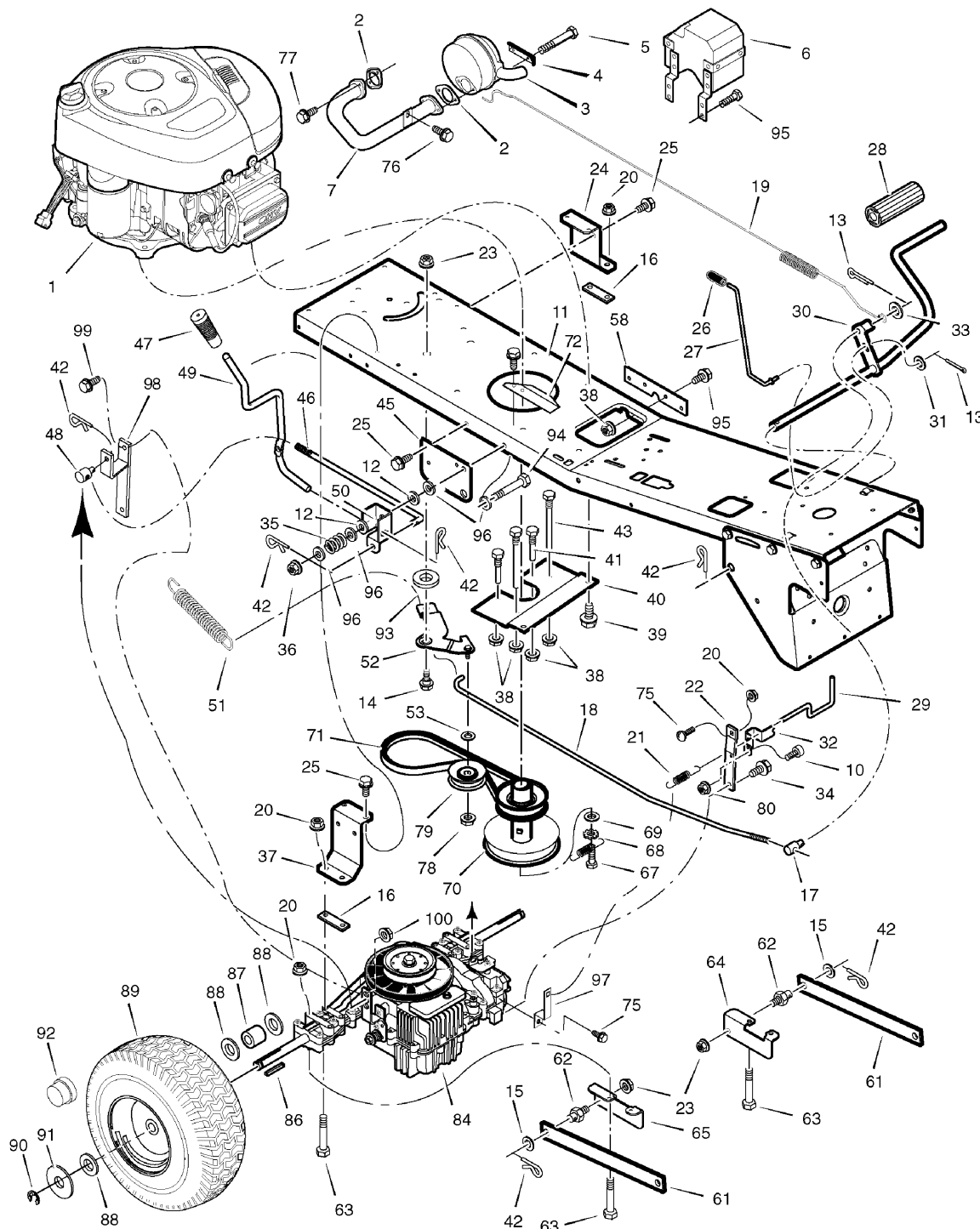
### The above parts group applies to the following Mfg. Nos.:

309001x08A Mid-Engine Rider (2009)

# Motion Drive

NOTE: Unless noted otherwise,  
use the standard hardware torque  
specification chart.

0007



The above parts group applies to the following Mfg. Nos.:  
309001x08A Mid-Engine Rider (2009)

## Motion Drive

REF NO	PART NO.	DESCRIPTION
45	1401032E701MA	BRACKET, Lift Pivot
46	1401307ZMA	ROD, Shift Link
47	094497MA	GRIP
48	1401148ZMA	NUT, Adjusting
49	1401383MA	LEVER, Shift
50	1401340ZMA	BRACKET, Pivot
51	165X147MA	SPRING, Variator Drive
52	1741785ZYP	ARM, Idler
53	017X91MA	WASHER
58	1401260E701MA	PLATE, Reinforcement
61	1401031E701MA	ARM, Rear
62	094067MA	PIN, Threaded
63	01X155MA	BOLT, Hex, 5/16-18 x 3
64	1401301E701MA	BRACKET, Left Rear Hanger
65	1401302E701MA	BRACKET, Right Rear Hanger
67	01X140MA	BOLT, Hex, 7/16-20 x 1-1/1
68	019X35MA	LOCKWASHER
69	17X170MA	WASHER
70	1401308MA	PULLEY, Stack
71	37X129MA	BELT, Drive
72	1401396MA	HEAT SHIELD
75	002X53MA	BOLT, Carriage, 5/16-18 x 5/8
76	26X263MA	SCREW, 1/4-20
77	06X103MA	SCREW, 5/16-18
78	015X98MA	LOCKNUT
79	1401309MA	PULLEY, Idler
80	15X143MA	NUT, Hex Flange, 1/4-20
84	1741781YP	TRANSAXLE, Hydro Gear, T-2 Hydro
86	056534MA	KEY, Square
87	1401103MA	SPACER, Rear Wheel
88	17X160MA	Washer
89	1401120MA	WHEEL & TIRE ASSEMBLY
90	0011X3MA	E-RING
91	17X195MA	WASHER
92	094618MA	Hub Cap
93	17X174ZMA	WASHER
94	01X143MA	BOLT, Hex, 3/8-24
95	26X267MA	SCREW, 5/16-18
96	710083MA	WASHER
97	1742430ZYP	BRACKET, Spring Extension

### Footnotes

Note\* See your local Briggs & Stratton distributor for parts and service.

Note\*\* For information on Replacement Parts for this transaxle contact the manufacturer.

---

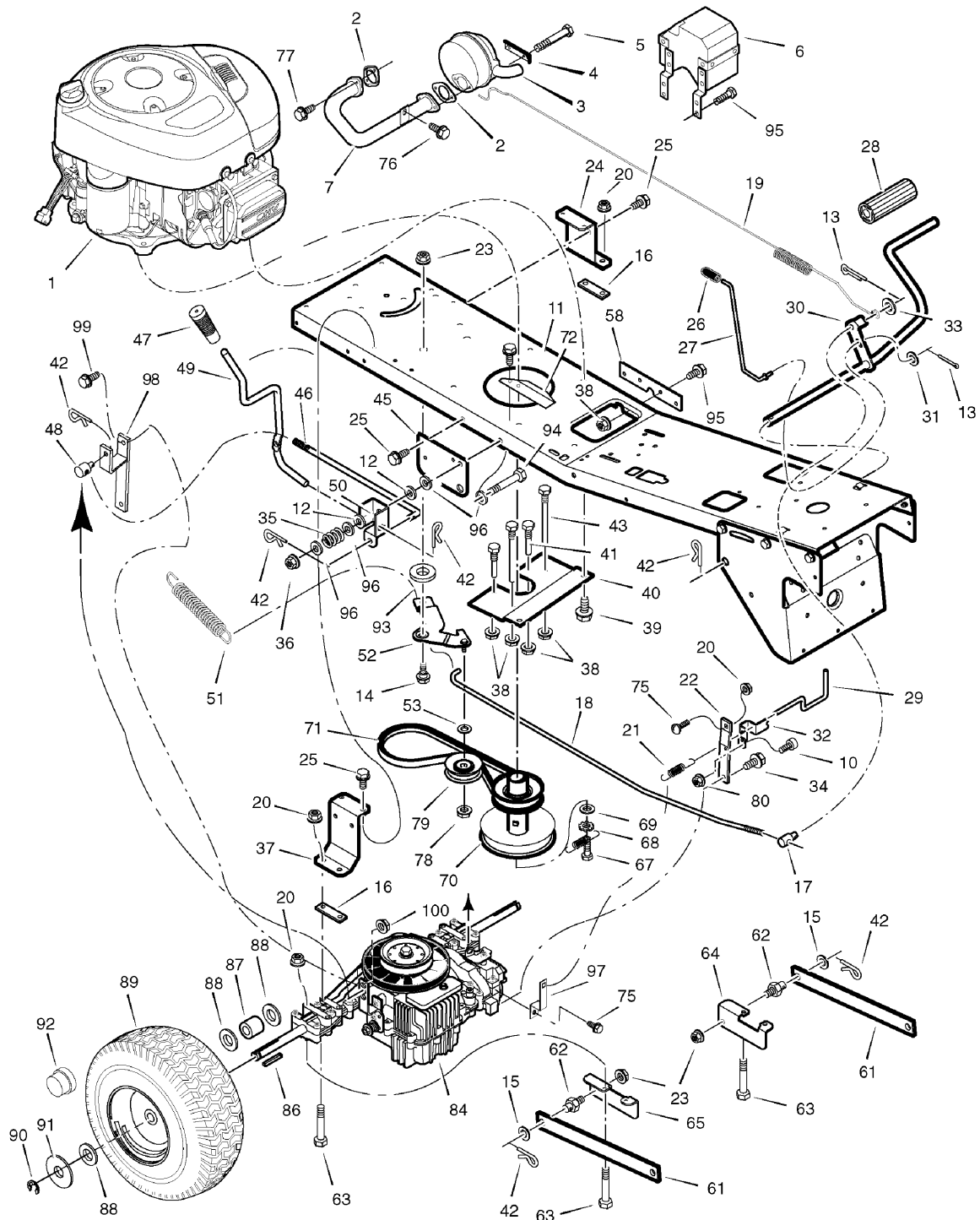
### The above parts group applies to the following Mfg. Nos.:

309001x08A Mid-Engine Rider (2009)

# Motion Drive

NOTE: Unless noted otherwise,  
use the standard hardware torque  
specification chart.

0007



The above parts group applies to the following Mfg. Nos.:  
309001x08A Mid-Engine Rider (2009)

## ***Motion Drive***

---

<b>REF NO</b>	<b>PART NO.</b>	<b>DESCRIPTION</b>
98	1741784ZYP	BRACKET, Shift Lever
99	001X91MA	BOLT, Hex Head, 5/16-18 x 3/4
100	710026MA	NUT, Serrated Flange, 5/16-18
--	----	TUBE (ONLY)
--	----	TIRE (ONLY)

### **Footnotes**

Note\* See your local Briggs & Stratton distributor for parts and service.

Note\*\* For information on Replacement Parts for this transaxle contact the manufacturer.

---

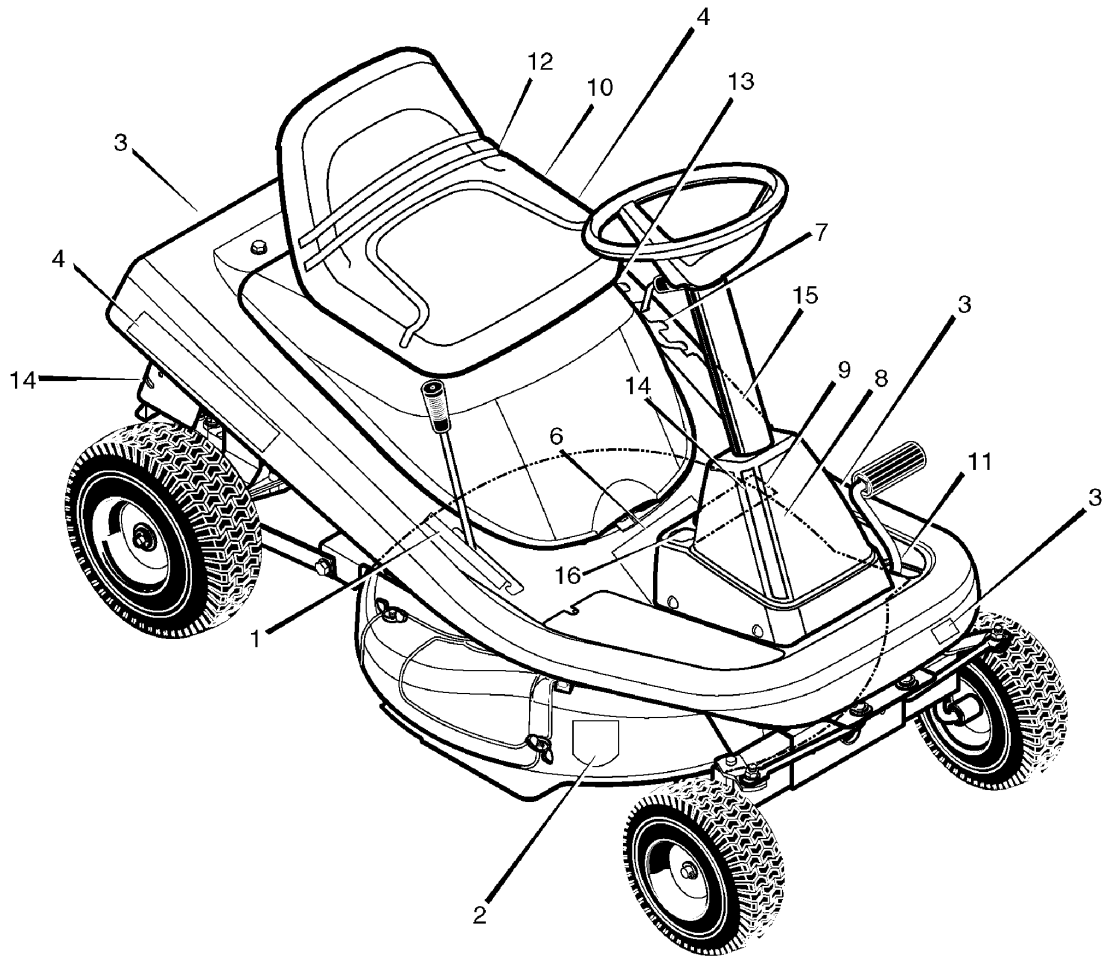
### **The above parts group applies to the following Mfg. Nos.:**

309001x08A Mid-Engine Rider (2009)

## Decals

0015

**NOTE:** Unless noted otherwise,  
use the standard hardware torque  
specification chart.



**The above parts group applies to the following Mfg. Nos.:**  
309001x08A Mid-Engine Rider (2009)

## Decals

REF NO	PART NO.	DESCRIPTION
1	48x927MA	DECAL, Engagement
2	48X5707MA	DECAL, English Cut Finger
3	1738419YP	DECAL, Turf Master
4	1738418YP	DECAL, Turf Master
6	44X7325MA	DECAL, Warning
7	48X928MA	DECAL, Height Adjust
8	48X5725MA	DECAL, Caution, No Step
9	48X5209MA	DECAL, Parking Brake Symbol
10	48X728MA	DECAL, Throttle Control
11	48X929MA	DECAL, Clutch Brake
12	48X729MA	DECAL, Gas Gauge
14	48X5057MA	DECAL, Drawbar Warning
15	48X5214MA	DECAL, Deck Level Position
16	48X5182MA	DECAL, Auto Disconnect
17	48X5204MA	DECAL, Starting Instructions

## Footnotes

---

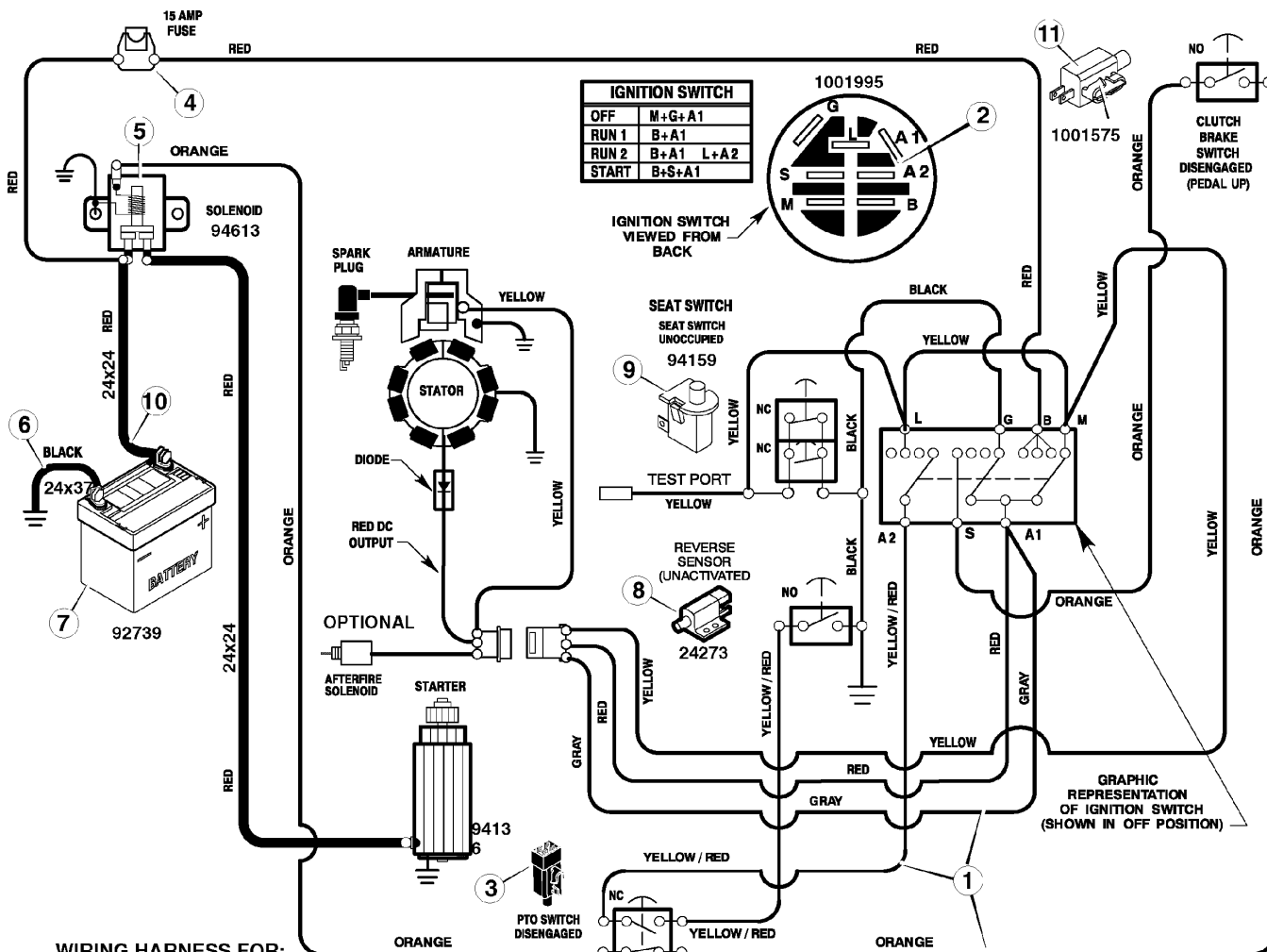
**The above parts group applies to the following Mfg. Nos.:**

309001x08A Mid-Engine Rider (2009)

# Electrical System

0013

NOTE: Unless noted otherwise, use the standard hardware torque specification chart.



**WIRING HARNESS FOR:**  
 30" MID ENGINE RIDER 2004  
 MAIN HARNESS: 250x145

The above parts group applies to the following Mfg. Nos.:  
 309001x08A Mid-Engine Rider (2009)

## **Electrical System**

<b>REF NO</b>	<b>PART NO.</b>	<b>DESCRIPTION</b>
1	250X146MA	HARNESS, Chassis Wire
2	1001995MA	SWITCH, Ignition
--	327349MA	KEY, Ignition
3	094136MA	SWITCH, Limit (PTO)
4	302031MA	FUSE
--	407078MA	HOLDER, Fuse
5	1002004MA	SOLENOID
--	26X229MA	SCREW, Mounting
--	15X116MA	LOCKNUT
6	24X37MA	CABLE, Battery Ground
--	26X229MA	SCREW, Ground Cable
7	----	BATTERY, 165CCA, 7.2V
--	690604MA	BOOT, Battery Terminal, Positive
--	002X82MA	BOLT, Carriage, 1/4-20 x 5/8
--	014X79MA	WINGNUT
8	024273MA	SWITCH, Select Reverse
--	26X270MA	SCREW, Mounting
9	094159MA	SWITCH, Seat Sensor
10	024X24MA	CABLE
11	1001575MA	SWITCH, Clutch Brake

### **Footnotes**

---

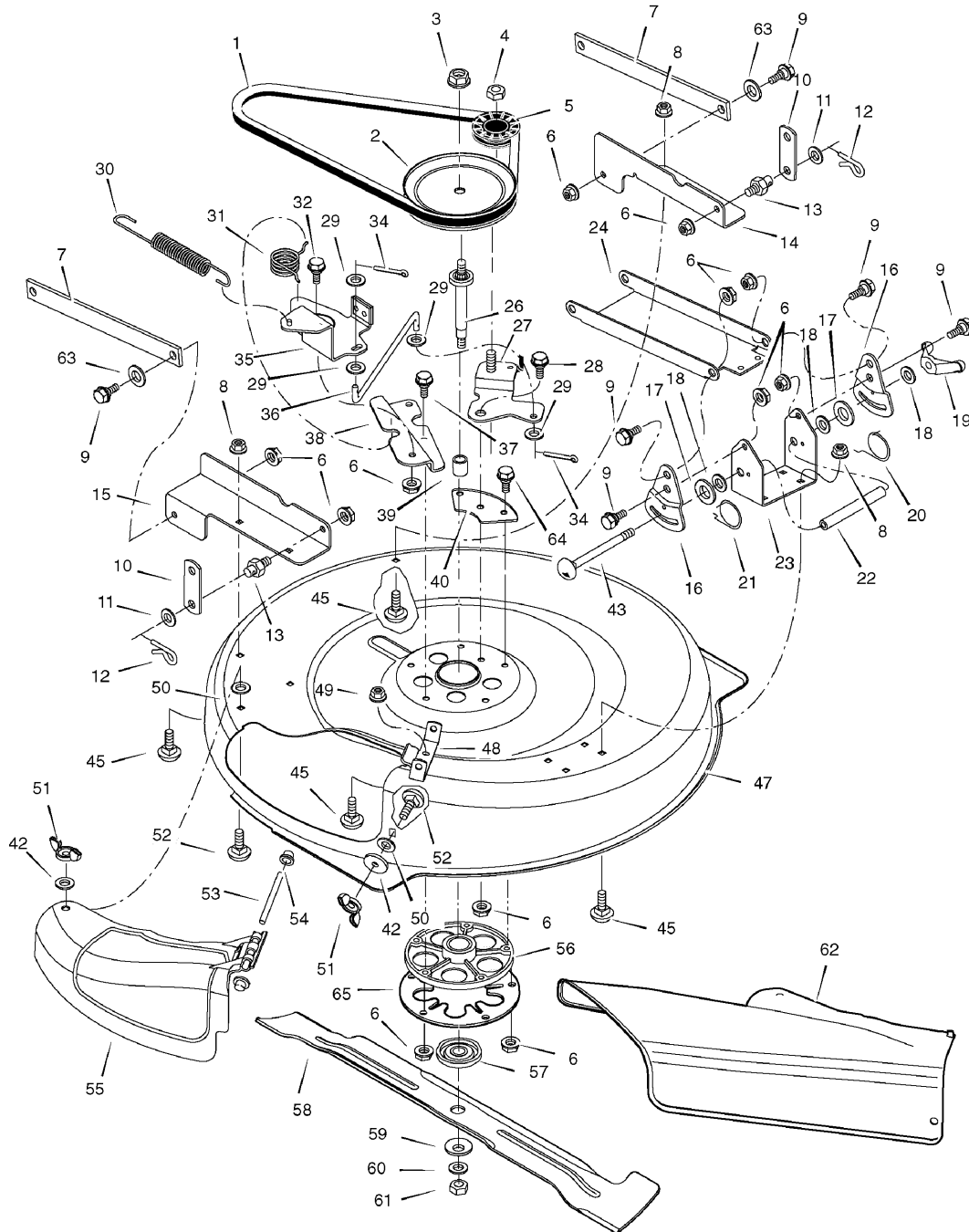
**The above parts group applies to the following Mfg. Nos.:**

309001x08A Mid-Engine Rider (2009)

# Mower Housing

0009

**NOTE: Unless noted otherwise,  
use the standard hardware torque  
specification chart.**



**The above parts group applies to the following Mfg. Nos.:**  
309001x08A Mid-Engine Rider (2009)

## Mower Housing

REF NO	PART NO.	DESCRIPTION
1	37X111MA	BELT, Blade Drive
2	1401092MA	PULLEY, Input
3	15X140MA	LOCKNUT
4	015X98MA	NUT, Flange
5	1401252MA	PULLEY, Idler
6	015X84MA	NUT, Flange, 3/8-16
7	1401031E701MA	ARM, Rear
8	015X79MA	NUT, Flange, 5/16-18
9	009X58MA	BOLT, Shoulder
10	1401033E701MA	LINK, Lift
11	17X102MA	WASHER
12	0031X4MA	PIN, Hair
13	094067MA	PIN, Threaded Shoulder
14	1401047E701MA	BRACKET, Left Rear
15	1401296E701MA	BRACKET, Right Rear
16	1401038E701MA	PLATE, Adjustment
17	094137MA	PAD, Friction
18	017X45MA	WASHER
19	095004MA	WINGNUT
20	166X43MA	SPRING, Left Torsion
21	166X42MA	SPRING, Right Torsion
22	1401095MA	TUBE, Spacer
23	1401037E701MA	BRACKET, Deck
24	1401369E701MA	HANGER, Front
26	1401065MA	SHAFT, Splined
27	1401258E701MA	ARM ASSEMBLY , Idler
28	009X39MA	BOLT, Shoulder
29	017X47MA	WASHER
30	165X157MA	Spring, Extension
31	166X46MA	Spring, Torsion
32	009X42MA	BOLT, Shoulder
34	030X20MA	PIN, Cotter
35	1401185E701MA	ARM ASSEMBLY, Brake
36	1401119MA	LINK, Idler Arm
37	0025X7MA	BOLT
38	1401052E701MA	BRACKET, Brake Mounting
39	1401094MA	SPACER, Jackshaft
40	1401259MA	Z PLATE, Idler Mounting
42	019X45MA	WASHER
43	002X94MA	BOLT, Carriage
45	002X53MA	BOLT, Carriage, 5/16-18

### Footnotes

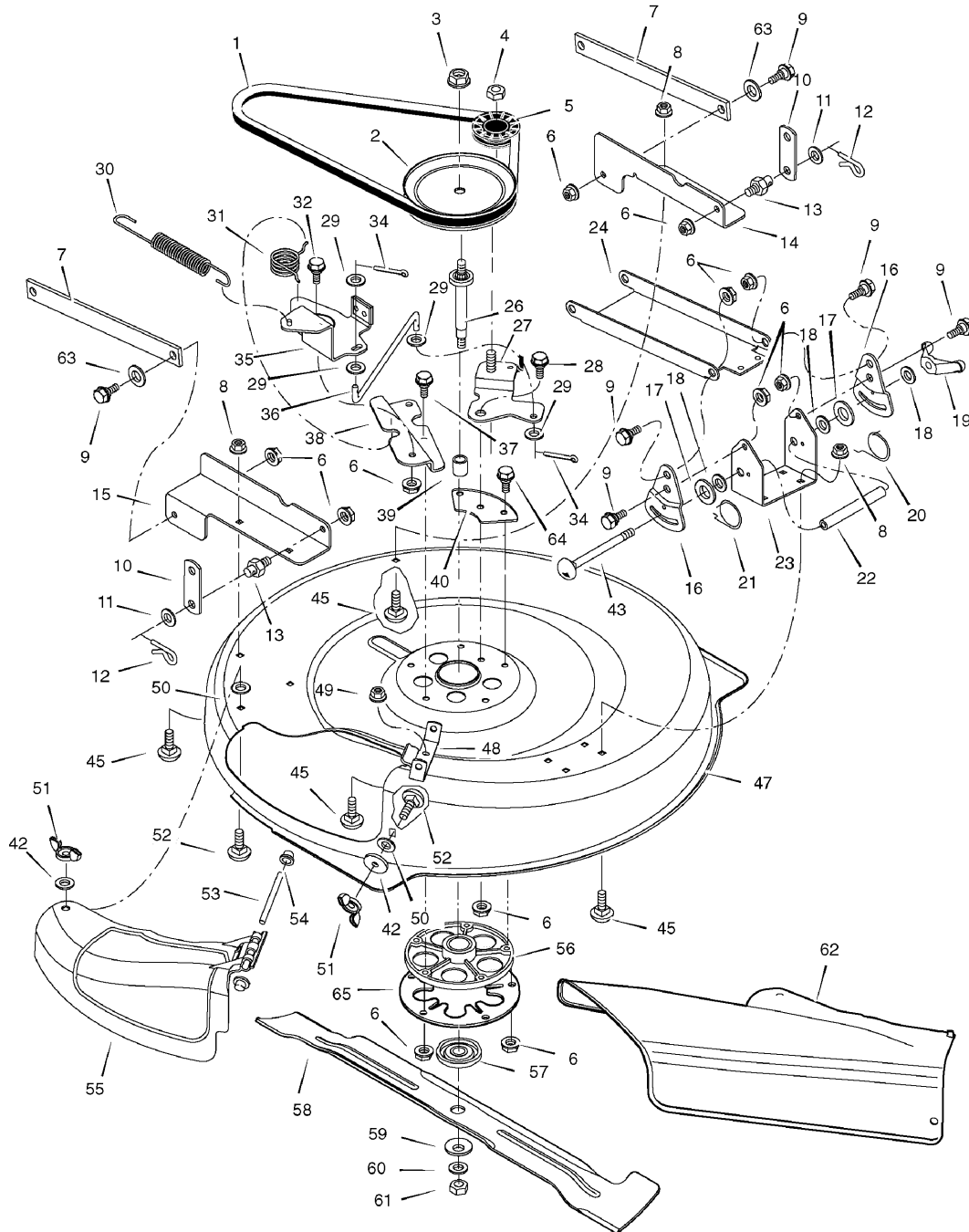
**The above parts group applies to the following Mfg. Nos.:**

309001x08A Mid-Engine Rider (2009)

# Mower Housing

0009

**NOTE:** Unless noted otherwise,  
use the standard hardware torque  
specification chart.



**The above parts group applies to the following Mfg. Nos.:**  
309001x08A Mid-Engine Rider (2009)

## **Mower Housing**

<b>REF NO</b>	<b>PART NO.</b>	<b>DESCRIPTION</b>
47	1401028E701MA	HOUSING, Blade
48	1401106E701MA	HINGE, Mulching Cover
49	015X88MA	NUT, Flange
50	028X76MA	NUT, Speed
51	014X86MA	WINGNUT
52	002X74MA	BOLT, Carriage, 5/16-18 x 3/4
53	091767ZMA	ROD, Chute Deflector
54	028X23MA	CAP, Push
55	1401080MA	COVER, Mulch
56	094305MA	MANDREL HOUSING
57	1001035MA	ADAPTER, Blade
58	1401079E701MA	BLADE
59	17X166MA	WASHER, Cup
60	17X165MA	WASHER
61	15X100MA	NUT, Blade Mount
62	1401081MA	DEFLECTOR, Chute
63	017X91MA	WASHER
64	025X23MA	BOLT
65	7300836ZMA	PLATE, Jackshaft Support

### **Footnotes**

---

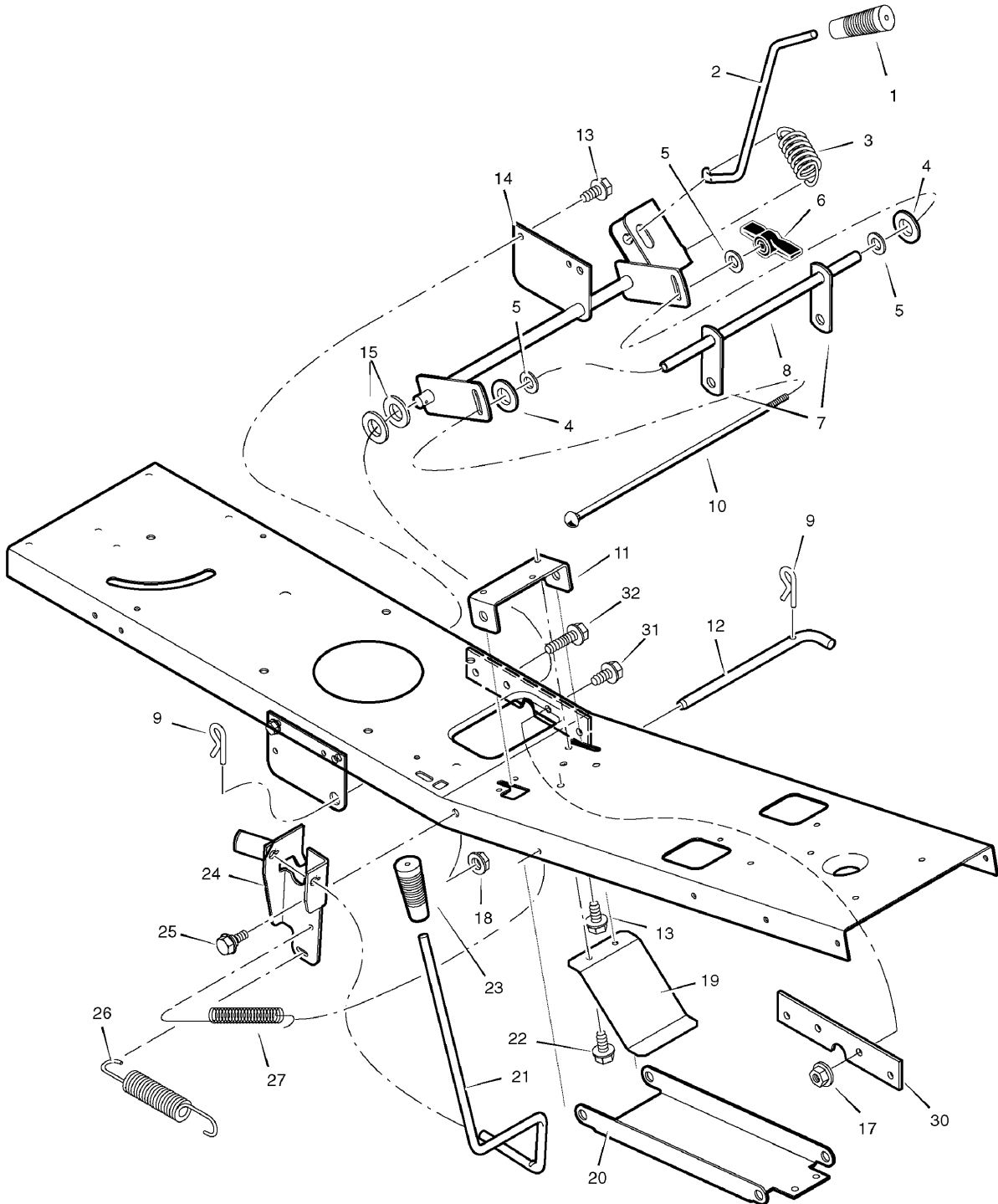
**The above parts group applies to the following Mfg. Nos.:**

309001x08A Mid-Engine Rider (2009)

# Mower Housing Suspension

0011

NOTE: Unless noted otherwise,  
use the standard hardware torque  
specification chart.



The above parts group applies to the following Mfg. Nos.:  
309001x08A Mid-Engine Rider (2009)

## Mower Housing Suspension

REF NO	PART NO.	DESCRIPTION
1	091079MA	GRIP, Lift Lever
2	1401117MA	LEVER, Lift
3	165X154MA	SPRING, Extension
4	094137MA	PAD, Friction
5	017X45MA	WASHER
6	095004MA	WINGNUT
7	1401033E701MA	LINK, Lift
8	1401096MA	TUBE, Spacer
9	0031X4MA	PIN, Hair
10	002X93MA	BOLT, Carriage
11	1401030E701MA	BRACKET, Front Hanger Pivot
12	1401118MA	PIN, Front Hanger
13	26X249MA	SCREW
14	1401129E701MA	ARM ASSEMBLY, Lifter
15	17X206MA	WASHER
17	015X79MA	NUT, Flange
18	015X84MA	NUT, Flange
19	1401147MA	SPRING, Leaf
20	1401040E701MA	HANGER, Front
21	1401116MA	LEVER, PTO
22	26X263MA	SCREW
23	094497MA	GRIP, PTO
24	1401199E701MA	BRACKET, PTO
25	009X42MA	BOLT, Shoulder
26	165X157MA	SPRING, Extension
27	165X92MA	SPRING, Extension
30	1401260E701MA	PLATE, Reinforcement
31	26X267MA	SCREW, 5/16 x 7/8
32	26X290MA	SCREW, 5/16-18 x 1-1/2

### Footnotes

---

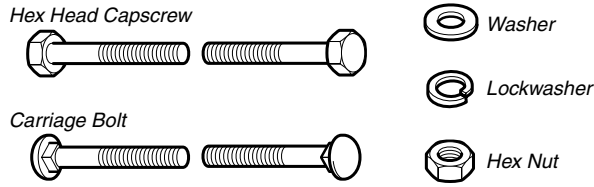
**The above parts group applies to the following Mfg. Nos.:**

309001x08A Mid-Engine Rider (2009)



# Hardware Identification & Torque Specifications

## Common Hardware Types

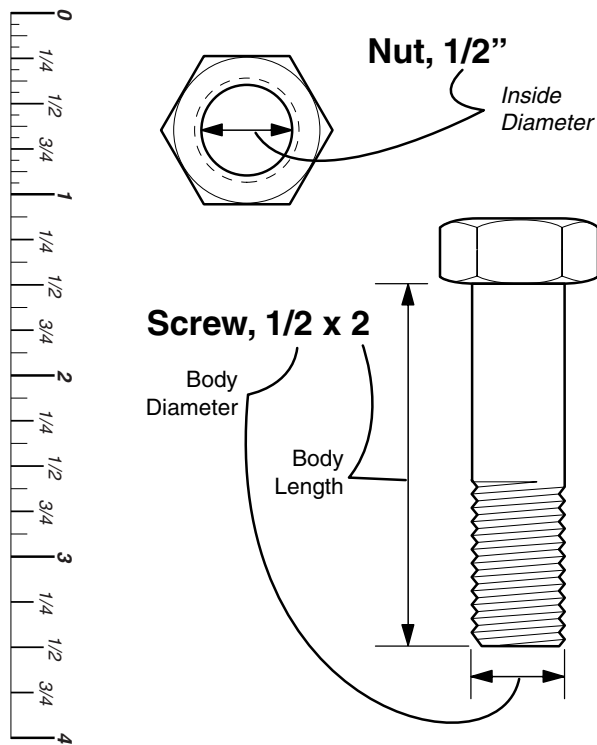


## Standard Hardware Sizing

When a washer or nut is identified as 1/2", this is the *Nominal size*, meaning the *inside diameter* is 1/2 inch; if a second number is present it represents the *threads per inch*

When bolt or capscrew is identified as 1/2 - 16 x 2", this means the *Nominal size*, or *body diameter* is 1/2 inch; the second number represents the *threads per inch* (16 in this example, and the final number is the *body length* of the bolt or screw (in this example 2 inches long).

**The guides and ruler furnished below are designed to help you select the appropriate hardware and tools.**



Torque Specification Chart						
FOR STANDARD MACHINE HARDWARE (Tolerance ± 20%)						
Hardware Grade	No Marks SAE Grade 2		SAE Grade 5		SAE Grade 8	
	in/lbs ft/lbs	Nm.	in/lbs ft/lbs	Nm.	in/lbs ft/lbs	Nm.
8-32	19	2.1	30	3.4	41	4.6
8-36	20	2.3	31	3.5	43	4.9
10-24	27	3.1	43	4.9	60	6.8
10-32	31	3.5	49	5.5	68	7.7
1/4-20	66	7.6	8	10.9	12	16.3
1/4-28	76	8.6	10	13.6	14	19.0
5/16-18	11	15.0	17	23.1	25	34.0
5/16-24	12	16.3	19	25.8	27	34.0
3/8-16	20	27.2	30	40.8	45	61.2
3/8-24	23	31.3	35	47.6	50	68.0
7/16-14	30	40.8	50	68.0	70	95.2
7/16-20	35	47.6	55	74.8	80	108.8
1/2-13	50	68.0	75	102.0	110	149.6
1/2-20	55	74.8	90	122.4	120	163.2
9/16-12	65	88.4	110	149.6	150	204.0
9/16-18	75	102.0	120	163.2	170	231.2
5/8-11	90	122.4	150	204.0	220	299.2
5/8-18	100	136	180	244.8	240	326.4
3/4-10	160	217.6	260	353.6	386	525.0
3/4-16	180	244.8	300	408.0	420	571.2
7/8-9	140	190.4	400	544.0	600	816.0
7/8-14	155	210.8	440	598.4	660	897.6
1-8	220	299.2	580	788.8	900	1,244.0
1-12	240	326.4	640	870.4	1,000	1,360.0

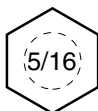
### NOTES

- These torque values are to be used for all hardware excluding: locknuts, self-tapping screws, thread forming screws, sheet metal screws and socket head setscrews.
- Recommended seating torque values for locknuts:
  - for prevailing torque locknuts - use 65% of grade 5 torques.
  - for flange whizlock nuts and screws - use 135% of grade 5 torques.
- Unless otherwise noted on assembly drawings, all torque values must meet this specification.

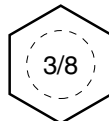
## Wrench & Fastener Size Guide



1/4" Bolt or Nut  
Wrench—7/16"



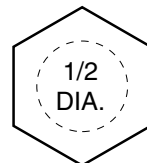
5/16" Bolt or Nut  
Wrench—1/2"



3/8" Bolt or Nut  
Wrench—9/16"



7/16" Bolt or Nut  
Wrench (Bolt)—5/8"  
Wrench (Nut)—11/16"



1/2" Bolt or Nut  
Wrench—3/4"

