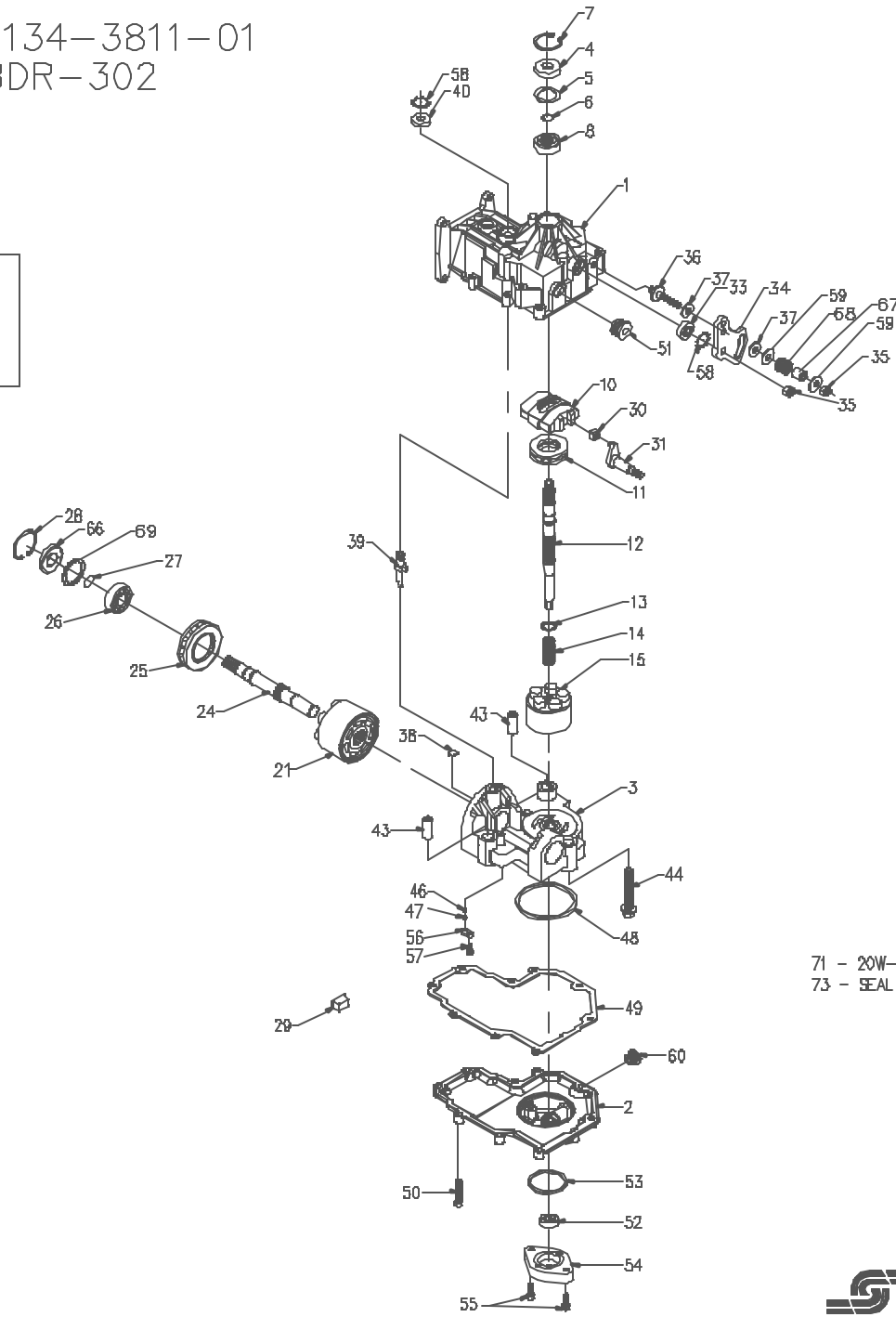
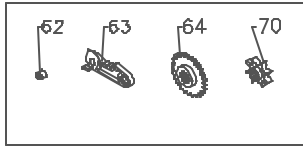


1134-3811-01
BDR-302



71 - 20W-50 OIL
73 - SEAL KIT

1134-3811-01
BDR-302

| ITEM # | PART # | QTY | DESCRIPTION |
|--------|--------------|-----|------------------------------|
| 1 | 70315 | 1 | UPPER HOUSING ASSEMBLY |
| 2 | 50301 | 1 | LOWER HOUSING |
| 3 | 70426 | 1 | CENTER SECTION ASSEMBLY |
| 4 | 9008000-0128 | 1 | LIP SEAL |
| 5 | 2003018 | 1 | SPACER |
| 6 | 2003016 | 1 | WIRE RETAINING RING |
| 7 | 2003052 | 1 | RETAINING RING |
| 8 | 2003043 | 1 | BALL BEARING |
| 10 | 2003087 | 1 | VARIABLE SWASHPLATE |
| 11 | 50551 | 1 | THRUST BEARING 30 X 52 X 13 |
| 12 | 50303 | 1 | INPUT SHAFT |
| 13 | 2003017 | 1 | BLOCK THRUST WASHER |
| 14 | 2003014 | 1 | BLOCK SPRING |
| 15 | 70331 | 1 | 10cc CYLINDER BLOCK ASSEMBLY |
| 21 | 70082 | 1 | 21cc CYLINDER BLOCK ASSEMBLY |
| 24 | 50933 | 1 | OUTPUT (MOTOR) SHAFT |
| 25 | 50552 | 1 | THRUST BEARING 42 X 68 X 16 |
| 26 | 50315 | 1 | BALL BEARING |
| 27 | 2000022 | 1 | WIRE RETAINING RING |
| 28 | 50329 | 1 | RETAINING RING |
| 29 | 50649 | 1 | RETAINER, MOTOR BEARING |
| 30 | 2000015 | 1 | SLOT GUIDE |
| 31 | 50807 | 1 | TRUNNION ARM |
| 33 | 51041 | 1 | LIP SEAL |
| 34 | 50733 | 1 | CONTRDL ARM |
| 35 | 50317 | 2 | HEX LOCK NUT, 5/16-24 |
| 36 | 50284 | 1 | STUD - 5/16-24 |
| 37 | 50281 | 2 | FRICITION PUCK |

| ITEM # | PART # | QTY | DESCRIPTION |
|--------|--------------|--------|---------------------------|
| 38 | 2003554 | 1 | BYPASS PLATE |
| 39 | 2003555 | 1 | BYPASS ACTUATOR |
| 40 | 45074 | 1 | LIP SEAL |
| 43 | 50002 | 2 | PIN |
| 44 | 50016 | 3 | SCREW |
| 46 | 2000029 | 1 | CHARGE RELIEF SPRING |
| 47 | 9001214-2500 | 1 | BALL |
| 48 | 50578 | 1 | O RING |
| 49 | 50331 | 1 | GASKET |
| 50 | 44876 | 9 | SCREW-SELF TAPPING |
| 51 | 9005110-8700 | 1 | DRAIN PLUG |
| 52 | 50273 | 1 | GEROTOR ASSEMBLY |
| 53 | 9004101-1340 | 1 | O RING |
| 54 | 50260 | 1 | GEROTOR COVER |
| 55 | 50095 | 2 | SCREW |
| 56 | 50651 | 1 | PLATE RELIEF |
| 57 | 50653 | 1 | SCREW |
| 58 | 50650 | 2 | RETAINING RING |
| 59 | 44130 | 2 | WASHER |
| 60 | 9005200-5600 | 1 | SHIPPING PLUG |
| 62 | 51108 | 1 | BUSHING 0.260X0.394X0.330 |
| 63 | 51104 | 1 | PARKING BRAKE ARM |
| 64 | 50754 | 1 | BRAKE SPROCKET |
| 66 | 51161 | 1 | LIP SEAL 17 X 40 X 7 |
| 67 | 50278 | 1 | SPACER |
| 68 | 50277 | 1 | SPRING |
| 69 | 50951 | 1 | SPACER |
| 70 | 50944 | 1 | SPROCKET |
| 71 | | 34.6oz | 20W50 OIL |
| 73 | 70490 | 1 | SEAL KIT |