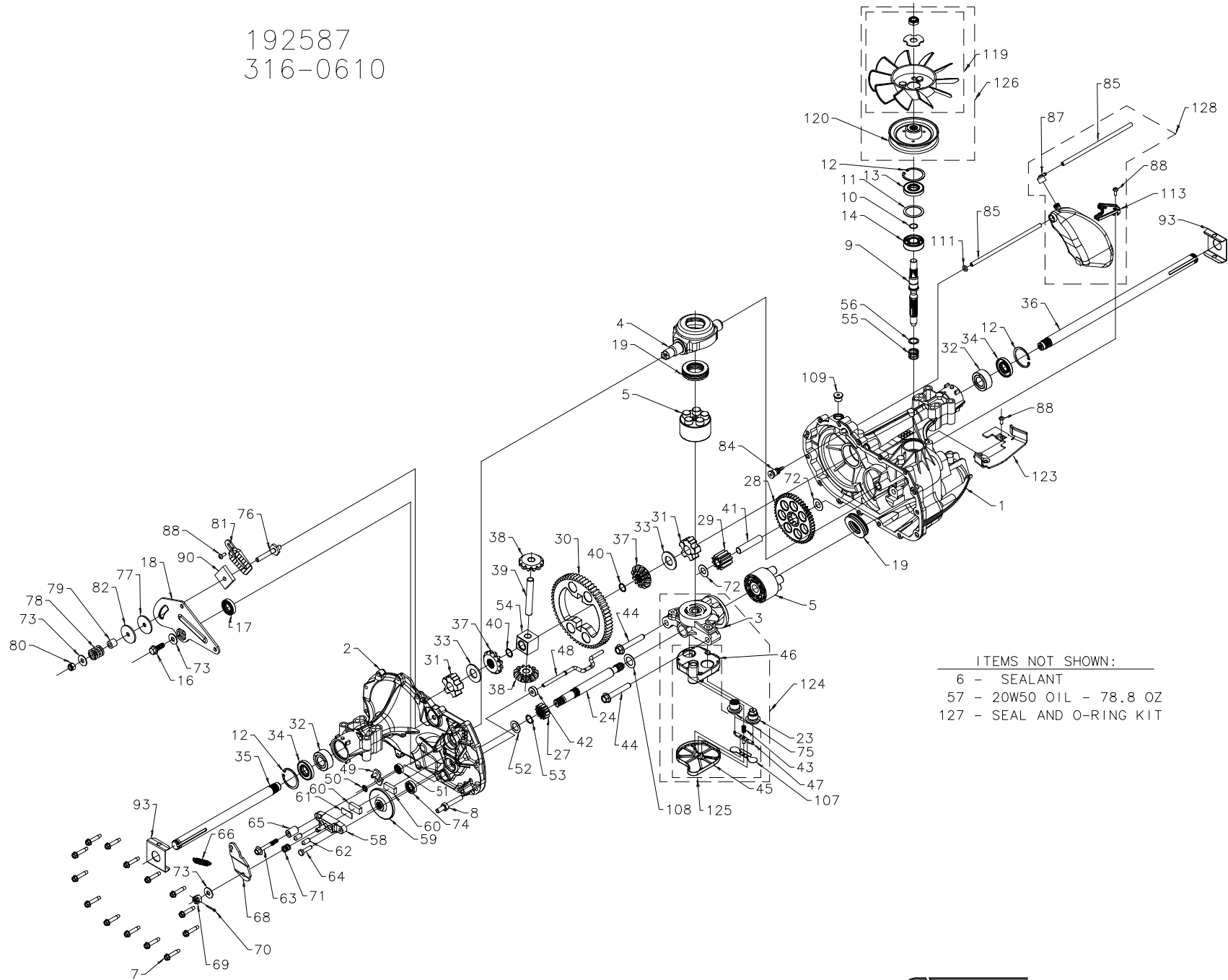


192587
316-0610



ITEMS NOT SHOWN:
6 - SEALANT
57 - 20W50 OIL - 78.8 OZ
127 - SEAL AND O-RING KIT

192587
316-0610

ITEM	PART NUMBER	QTY	DESCRIPTION
1	70467	1	MAIN HOUSING, ASSEMBLY
		1	MAIN HOUSING
		1	BUSHING .865 X .985 X .790
		2	PIN, HEADLESS STANDARD
2	70483	1	SIDE HOUSING, ASSEMBLY
		1	SIDE HOUSING
		1	BUSHING .865 X .985 X .790
		1	BUSHING .624 X .719 X .562
3	70477	1	CENTER SECTION, ASSEMBLY
		1	CENTER SECTION
		1	BUSHING .707 X .788 X .591
4	51048	1	TRUNNION, SWASHPLATE
5	70331	2	BLOCK, ASSEMBLY
		1	BLOCK, CYLINDER
		5	PISTON
		5	SPRING, COMPRESSION
		5	WASHER, THRUST
6	50928	10.1 OZ	SEALANT
7	51190	14	SCREW, HEX WASHER 1/4-20 X 1.25
8	51061	1	STUD, 5/16-24 HEX DOUBLE END
9	51062	1	SHAFT, INPUT
10	2000022	1	RING, RETAINING
11	50951	1	SPACER
12	50329	3	RING, RETAINING
13	51161	1	SEAL, LIP 17 X 40 X 7
14	50315	1	BEARING, BALL 17MM ID X 40MM OD X 12MM
16	51064	1	BOLT, HEX FLANGE HEAD 5/16-24X.94 (PATCH)
17	51140	1	SEAL, LIP 18 X 32 X 7
18	51204	1	ARM, CONTROL
19	50551	2	BEARING, THRUST 30 X 52 X 13
23	51843	1	SHOCK VALVE ASSEMBLY 270 BAR
24	50966	1	SHAFT, MOTOR
27	51767	1	GEAR, 12T PINNION
28	51766	1	GEAR, 10T/49T
29	51043	1	GEAR, 10T JACKSHAFT
30	51847	1	GEAR, 60T BULL
31	51088	2	BUSHING, SLEEVE (INBOARD)
32	51089	2	BUSHING, SLEEVE .752 X 1.571 X .625
33	44875	2	WASHER, 3/4 ID X 1-1/2 OD X .13 THK
34	51066	2	SEAL, LIP .750 X 1.577 X .250
35	51827	1	SHAFT, AXLE .75 X 11.39 (KEY, R.H.)
36	51828	1	SHAFT, AXLE .75 X 16.99 (KEY, L.H.)
37	51829	2	GEAR, STEEL MITER 12T (SPLINED)
38	51830	2	GEAR, STEEL MITER 12T (.50ID)
39	50146	1	SHAFT, DIFF
40	44871	2	RING, SPIRAL RETAINING
41	51083	1	PIN, JACKSHAFT

ITEM	PART NUMBER	QTY	DESCRIPTION
42	51100	1	MAGNET, RING
43	51136	1	SPRING, BYPASS
44	50016	2	BOLT, HEX FLANGE 3/8-24 X 2.5
45	51581	1	BOTTOM, FILTER
46	51580	1	BASE, FILTER W/POPPET
47	51091	1	ACTUATOR, BYPASS
48	51098	1	ROD, ACTUATOR BYPASS
49	52223	1	ARM, BYPASS
50	51116	1	RING, RETAINING .250 EXTERNAL
51	51081	1	SEAL, LIP .250 X .750 X .250 TC
52	44371	1	WASHER, FLAT 5/8 ID X 1.0 OD X .05 THK
53	44145	1	RING, RETAINING
54	51071	1	BUSHING, CENTER BLOCK
55	2003014	1	SPRING, BLOCK
56	2003017	1	WASHER, THRUST
57		78.8 OZ	OIL, 20W50
58	62589	1	KIT, BRAKE YOKE
		1	YOKE, BRAKE
		1	BOLT, SQ.HD. 5/16-24 - RIBBED
59	51072	1	ROTOR, BRAKE
60	44132	2	PUCK, BRAKE
61	44134	1	PLATE, PUCK
62	44127	2	PIN, BRAKE ACTUATING
63	51146	1	SCREW, SPECIAL FLANGE 1/4-20 X 2 W/PATCH
64	44433	1	BOLT, 1/4-20 X 1 W/PATCH
65	23711	1	SPACER
66	51607	1	SPRING, BRAKE ARM BIAS
68	44094	1	ARM, BRAKE
69	44142	1	NUT, CASTLE 5/16-24
70	44101	1	PIN, COTTER 3/32 X 3/4
71	50919	1	SPRING, COMPRESSION BRAKE ANTI-DRAG
72	50132	2	WASHER, HT .5 X 1 X .032
73	44130	3	WASHER, FLAT 11/32 I.D. X 7/8 O.D
74	70719	1	KIT, SEAL
		1	SEAL, LIP .625 X 1.0 X .25
		1	RING, RETAINING - STAR WASHER
		1	BULLETIN, SHAFT SEAL
75	51084	1	CHECK PLUG ASSEMBLY, .027, WASHER
76	50284	1	STUD, 5/16-24 FRICTION PACK
77	51113	1	PUCK, .330 X 1.50 X .0975
78	50277	1	SPRING, HELICAL COMP
79	50278	1	SPACER
80	50317	1	NUT, HEX LOCK 5/16-24 UNJF (NYLON INSERT)
81	51226	1	WEDGE, FRICTION PACK
82	51114	1	SPACER, FRICTION PACK
84	51143	1	FITTING, 5/16 SAE 5/32 TUBE
85	51147	2	HOSE, EXPANSION TANK
87	51687	1	CAP, EXPANSION
88	50653	3	BOLT, SELF TAPPING 10-32 X 1/2
90	51227	1	PUCK, INNER WEDGE
93	51118	2	SPRING CLIP, HOUSING THRUST

ITEM	PART NUMBER	QTY	DESCRIPTION
107	51134	1	DEFLECTOR
108	51069	1	WASHER, MOTOR SHAFT .71 X 1.16 X .04 THK
109	9005110-5600	1	PLUG, 9/16-18 (METAL)
111	51144	1	O-RING .103 ID X .299 OD
113	51179	1	BRACKET,SUPPORT EXPANSION TANK
119	70579	1	KIT, FAN
		1	FAN, 7 IN 10 BLADE
		1	NUT, HEX LOCK 1/2-20 (NYLON INSERT)
		1	WASHER, OD SLOTTED, .53 X 1.63 X .06
120	51231	1	PULLEY, 3.86 IN
123	52348	1	BRACKET, BELT KEEPER, ANGLED
124	71315	1	CENTER SECTION, FILTER, BYPASS ASSEMBLY
		1	CENTER SECTION
		1	BASE, FILTER WITH POPPET
		1	SHOCK VALVE ASSEMBLY, 270 BAR
		1	CHECK PLUG ASSEMBLY, .027 WASHER
		1	SPRING, BYPASS
		1	ACTUATOR,BYPASS
		1	DEFLECTOR
		1	BOTTOM, FILTER
		1	BUSHING, .707 X .788 X .591
125	70756	1	FILTER ASSEMBLY
		1	BOTTOM, FILTER
		1	SPRING,BYPASS
		1	ACTUATOR,BYPASS
		1	DEFLECTOR
		1	BASE, FILTER WITH POPPET
126	70460	1	KIT, FAN/PULLEY
		1	NUT, HEX JAM 1/20-20 (NYLON INSERT)
		1	WASHER, OD SLOTTED, .53 X 1.63 X .06
		1	FAN, 7 IN 10 BLADE
		1	PULLEY, 3.86 IN
127	70463	1	SEAL, O-RING KIT
		1	SEAL, LIP 17 X 40 X 7
		1	SEAL, LIP 18 X 32 X 7
		2	SEAL, LIP .750 X 1.577 X .250
		1	SEAL, LIP .250 X .750 X .250
		1	SEAL, LIP .625 X 1.0 X .25
		1	O-RING .103 ID X .299 OD
128	71376	1	KIT, EXPANSION TANK
		1	TANK, EXPANSION ASSEMBLY
		1	CAP, BARBED VENT
		1	BOLT, SELF TAPPING 10-32 X 1/2
		1	BRACKET, SUPPORT EXPANSION TANK
		1	HOSE, EXPANSION TANK

