

2003 Dixon ZTR *Classic*



*Classic PIN 730
(With 42" Deck)*

Specifications		<i>Classic</i>
Turning Radius		Zero
Height of Cut (APPROX.)		1.5" to 3.5"
Width of Cut		42" (3 Blades)
Width (DEFLECTOR RETRACTED)		46"
Overall Width		55"
Weight (APPROX.)		475 lbs.
Tires	Front	11 X 4.0 X 5
	Rear	18 X 8.5 X 8
Blade Clutch		Electric
Engine		15.5HP Intek Briggs & Stratton
Fuel Capacity		2.4 gallons (1 Tank)
Drive		Standard Drive Transaxle
All models feature electric start. All specifications subject to change without notice.		

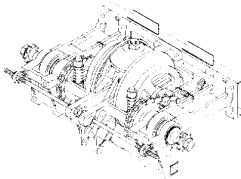
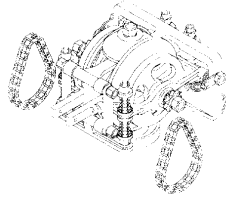
2003 Attachments	<i>Classic</i>
Blower (Requires Bagger, ClamShell or Cart)	214
Bagger (Requires Blower)	232
Cart (Requires Blower)	241
Clam Shell Grass Catcher (Requires Blower)	-
Mulcher	384
Cover	746
Snow Blade	156
Snow Chains	28
Wheel Weights	26
Weight Box Kit	-
Broomer Attach Kit	579
Broomer without Attach Kit	545
Assist Bar	641
Handy Lever	-

DIXON® ZTR®

Classic

4000 Series Model History

MODEL	YEARS	Description
ZTR1	1974	8 HP Briggs & Stratton
ZTR2	1974	8 HP Briggs & Stratton
ZTR3	1974	8 HP Briggs & Stratton
421	1974-1977	8 HP Briggs & Stratton
422	1974 -1982	8 HP Briggs & Stratton
423	1974-1976	8 HP Briggs & Stratton/Pull Start
424	1978-1986	11HP Briggs & Stratton/Round Headlights
425	1983-1984	11HP Briggs & Stratton/Rear Discharge
426	1983-1985	11HP Briggs & Stratton
427	1986-1988	12.5 HP Kawasaki
428	1987-1993	12 HP Briggs & Stratton
429	1989-1993	14 HP Kawasaki (89-90) 14 HP Kohler (1991-93)
4421	1994-1997	13 HP Diamond Series Briggs & Stratton
4422	1994-1996	14 HP Kohler Command Pro Series
4423	1997-2003	14 HP Briggs & Stratton Vanguard (1997) 15 HP Briggs & Stratton Vanguard (98-00) 15.5 HP Briggs & Stratton Vanguard(01-02) 15.5 HP Briggs & Stratton Intek (2003)
4424	1997-1998	15 HP Kohler /Z-Drive
4425	1999	15HP Briggs & Stratton/Anniversary Edition
4426	1999	16 HP Kohler
<i>Classic</i>	2002-2003	13.5 HP Briggs & Stratton Intek (2002) 15.5 HP Briggs & Stratton Intek (2003)
<p>1991 = First year for two piece body 1992 & Previous Decks = Metal deflector 1993 & Forward Decks = Plastic deflector 1993 Deck change/Shortened discharge 1983 & Previous = Manual deck engagement 1984 & Forward = Electric clutch engagement 1986 & Previous = Round headlights 1987 & Forward = Rectangle headlights Levers come straight up in the center = Standard Drive Transaxle Levers fold out = Z-Drive Transaxle</p>		



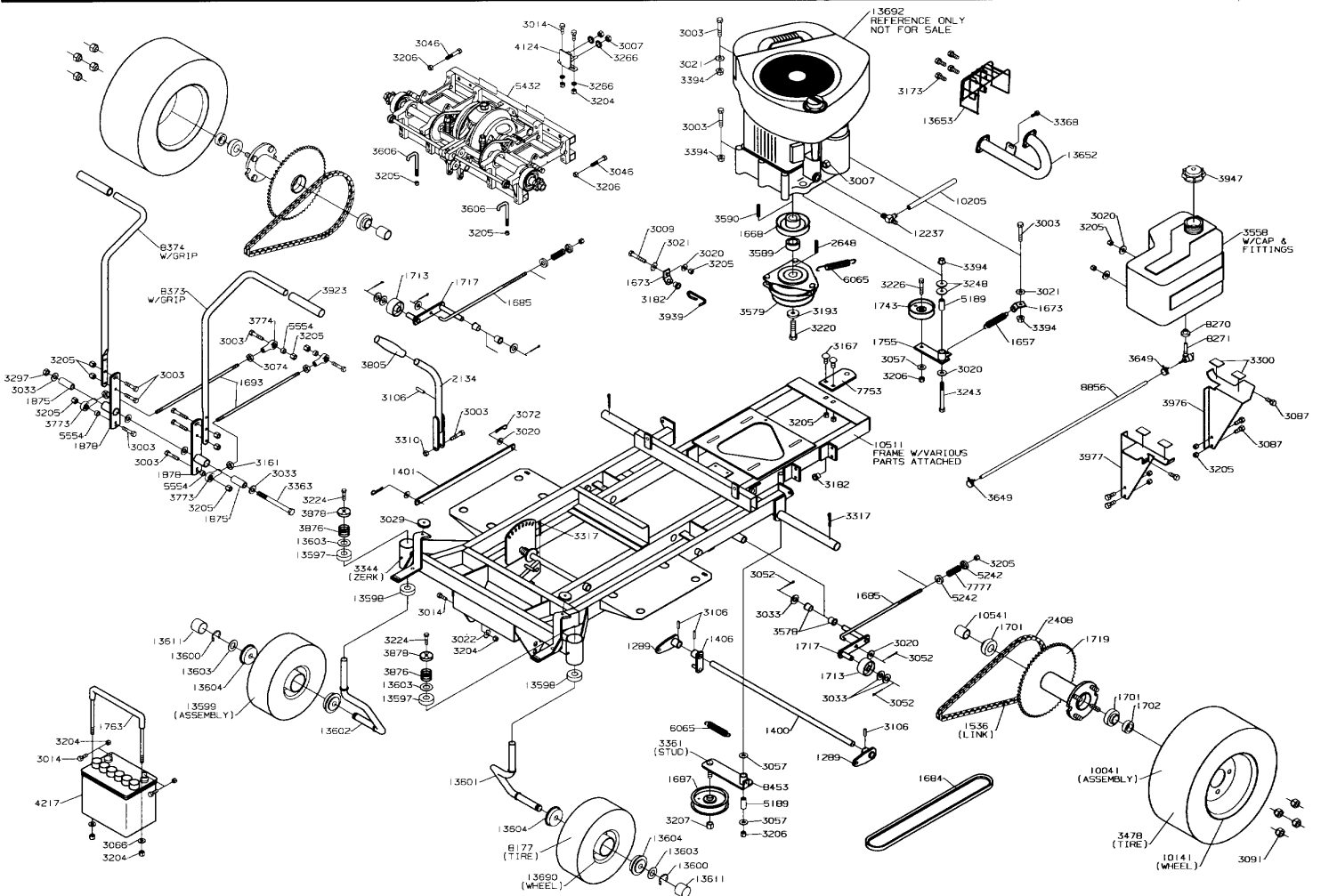
4000 Series -Serial Number Range

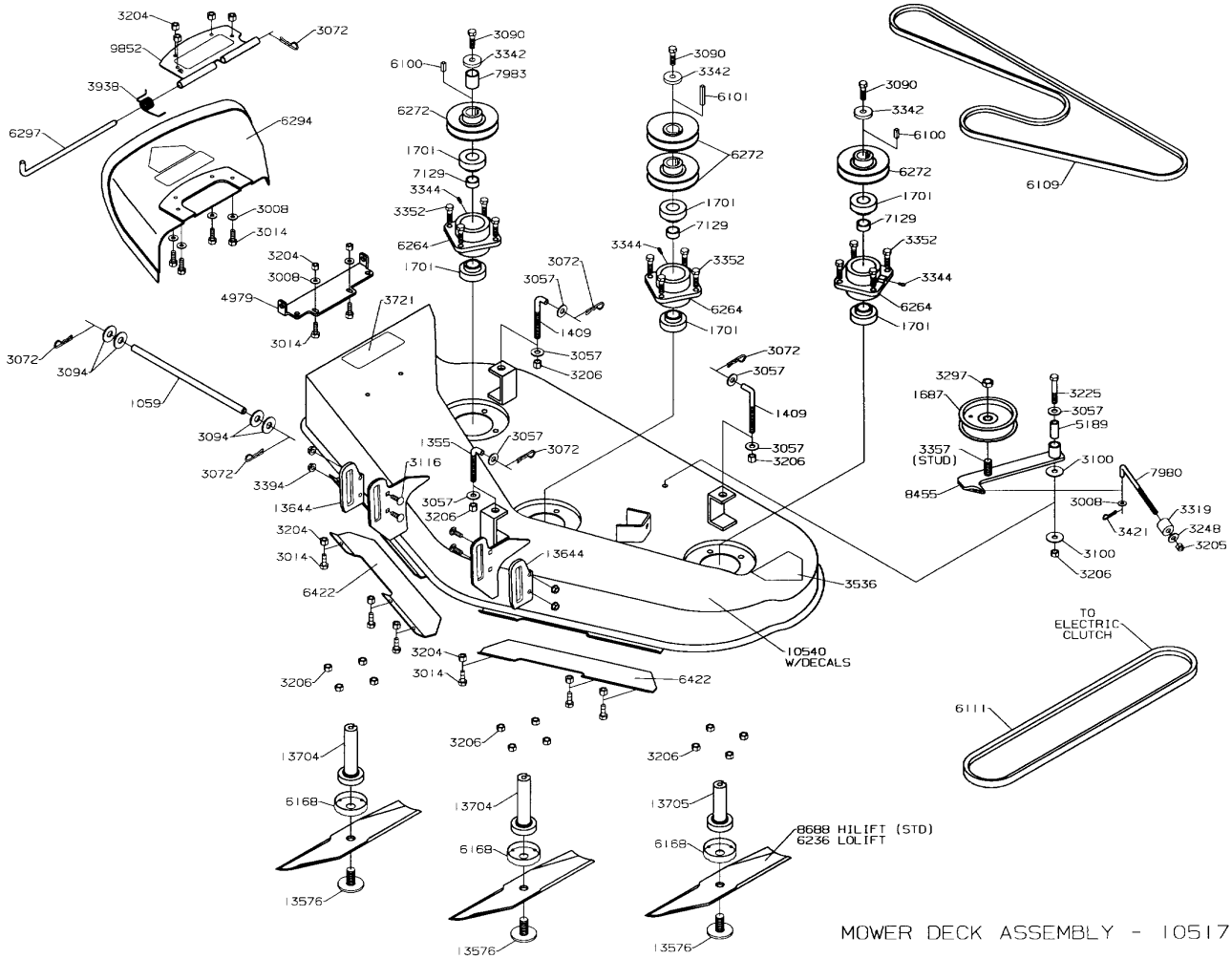
YEAR	BEGIN - END	YEAR	BEGIN - END		
1974	00454 - 00825	1986	30160 - 33295		
1975	00826 - 01686	1987	33296 -36323		
1976	01687 - 03290	1988	36324 - 40999		
1977	03301 - 04741	1989	41000 - 44354		
1978	04742 - 07147	1990	44355 - 48252		
1979	07148 - 11874	1991	48253 - 52841		
1980	11875 - 15526	1992	52842 - 57029		
1981	15527 - 17738	1993	57030 - 61582		
1982	17739 - 20708	1994	61583 - 67778		
1983	20709 - 23722	1995	67779 - 74455		
1984	23723 - 26970	1996	74456 - 81253		
1985	26971 - 30159	1997	81254 - 88339		
YEAR	MODEL	BEGIN - END	YEAR	MODEL	BEGIN END
1998	4423	88340 - 91151	2001	4423	95343-97143
1998	4424	88275 - 91173	2002	4423	97144-98784
1999	4423	91152 - 92848	2002	<i>Classic</i>	97527-98824
1999	4425	00000 - 00500	2003	4423	98913
1999	4426	91174 - 92848	2003	<i>Classic</i>	98825
2000	4423	92849-95342			

MODEL YEAR 2003

Classic

CHASSIS



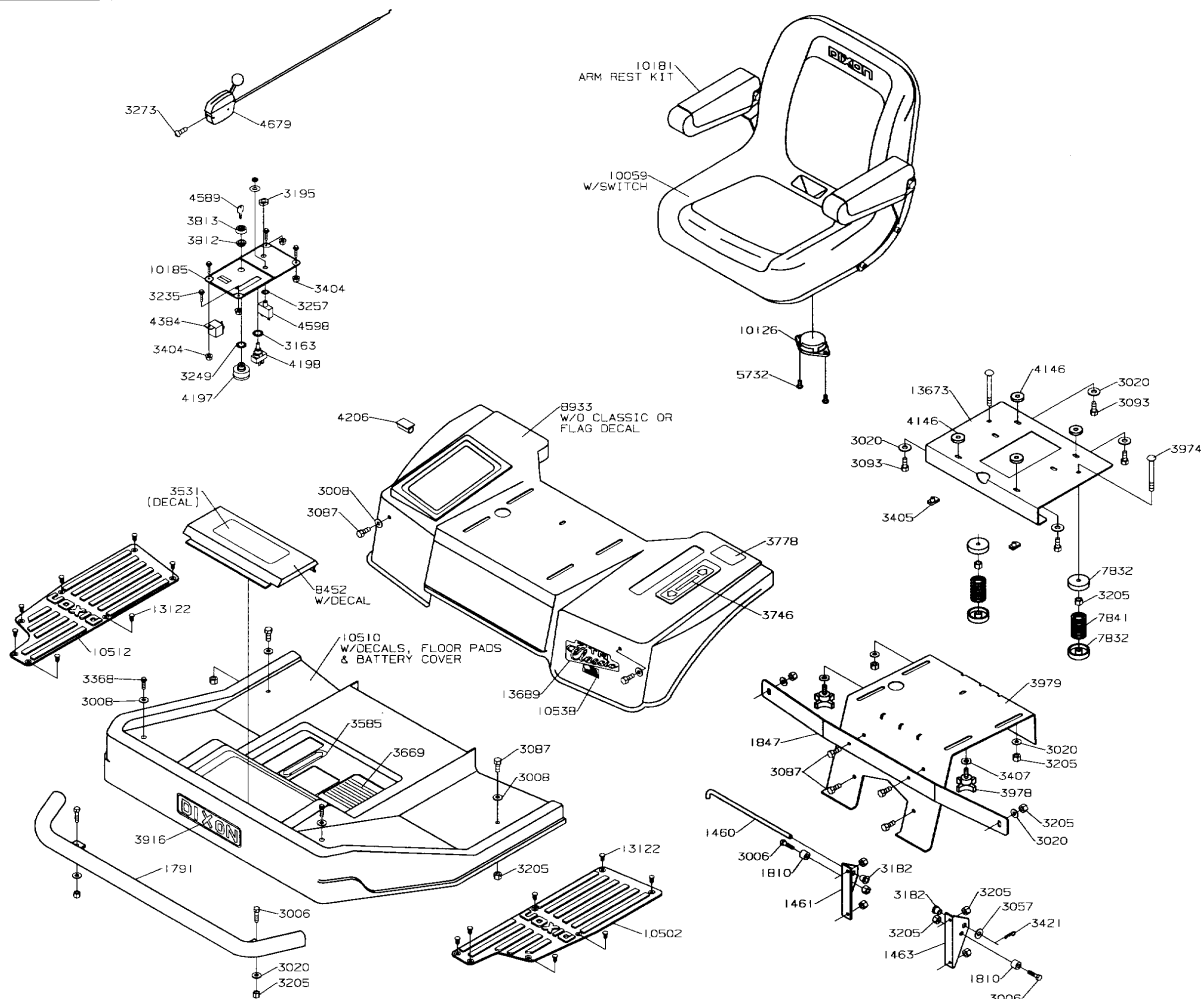


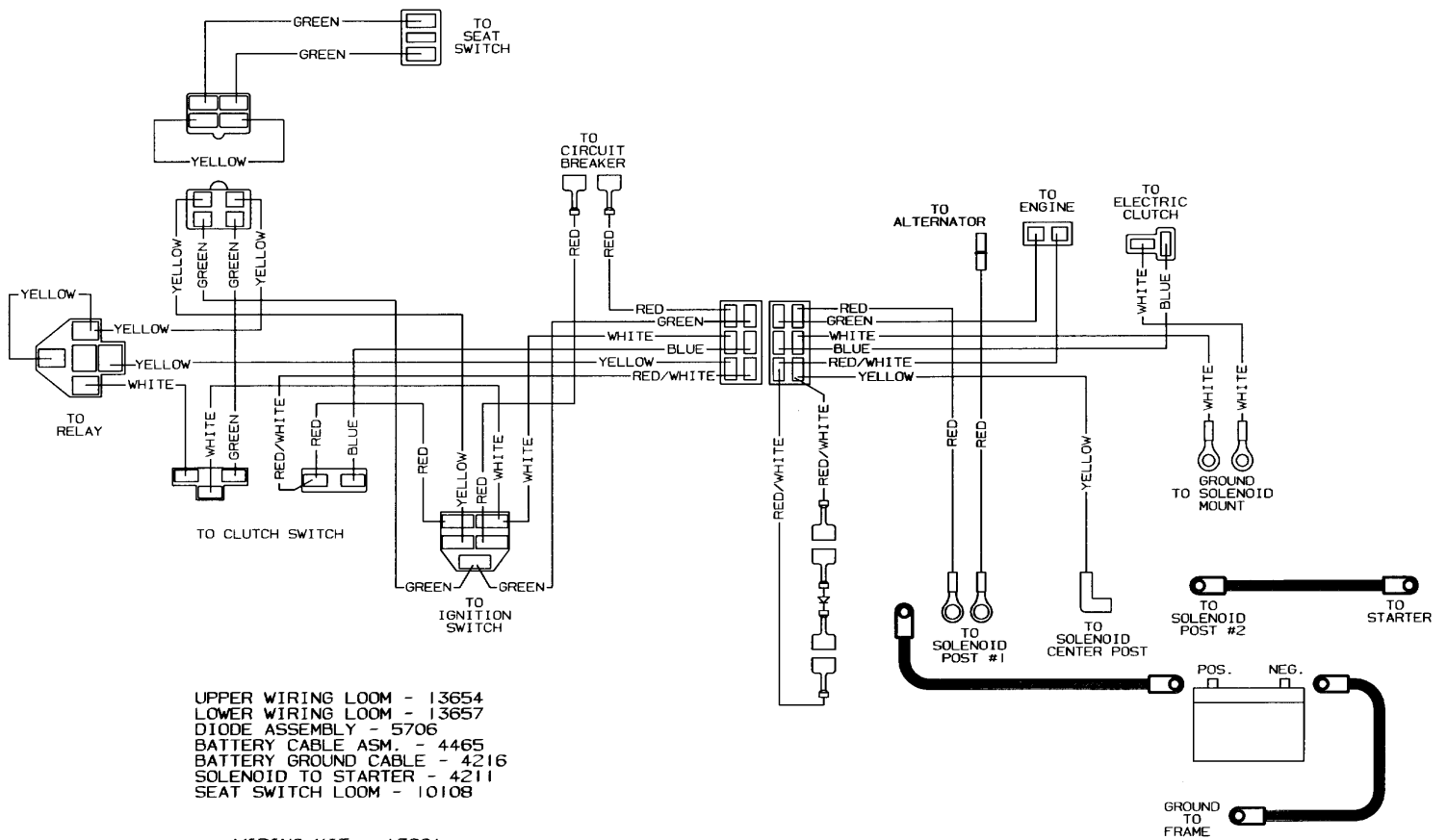
MOWER DECK ASSEMBLY - 10517

MODEL YEAR 2003

Classic

42" MOWER DECK





MODEL YEAR 2003

Classic

WIRING